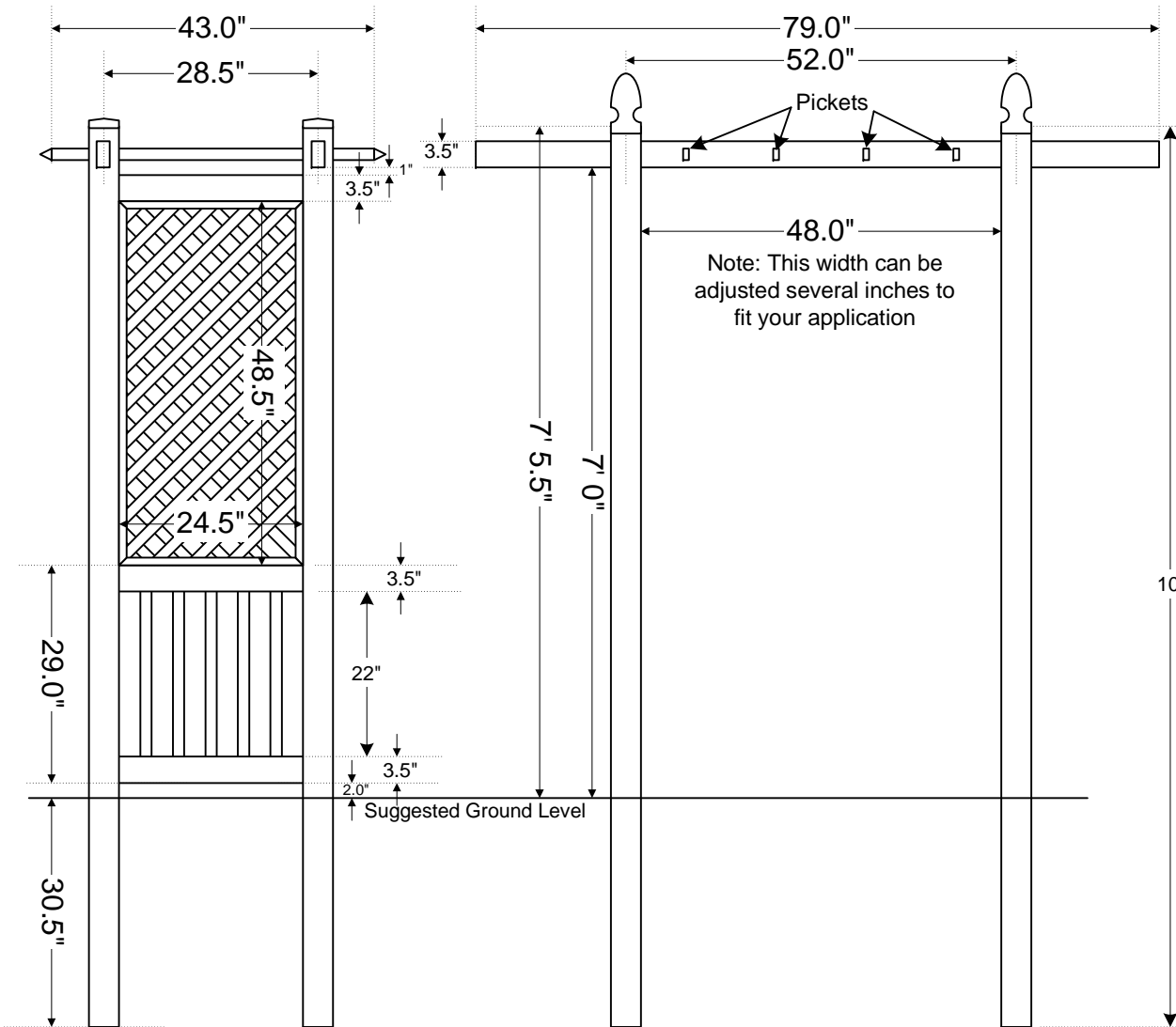


Madrid Garden Arbor

CAROLINA

608 Queen Street
P.O. Box 1137
Grifton, NC 28530



Material List

- 2 - Assembled Side Sections
- 4 - 4" x 4" Gothic Caps
- 2 - 1.75" X 3.5" X 79" Rail w/ Caps
- 4 - 7/8" X 1.5" X 47.75" Pickets w/ Caps

Assembly Instructions

1. Remove all items from box
2. With assembled side section on it's side, insert rails into holes in assembled side section.
3. Lock rails in place at desired width with hex screws inside post.
4. Install caps on post tops
5. Dig four holes 30" deep at desired location.
6. With help of a friend, stand arbor upright and place in holes.
7. Using props or anchor cord, plumb arbor both directions.
8. Fill post holes with hard tamped clay in 6" layers, or set in concrete.
9. Install pickets centered in top rails.