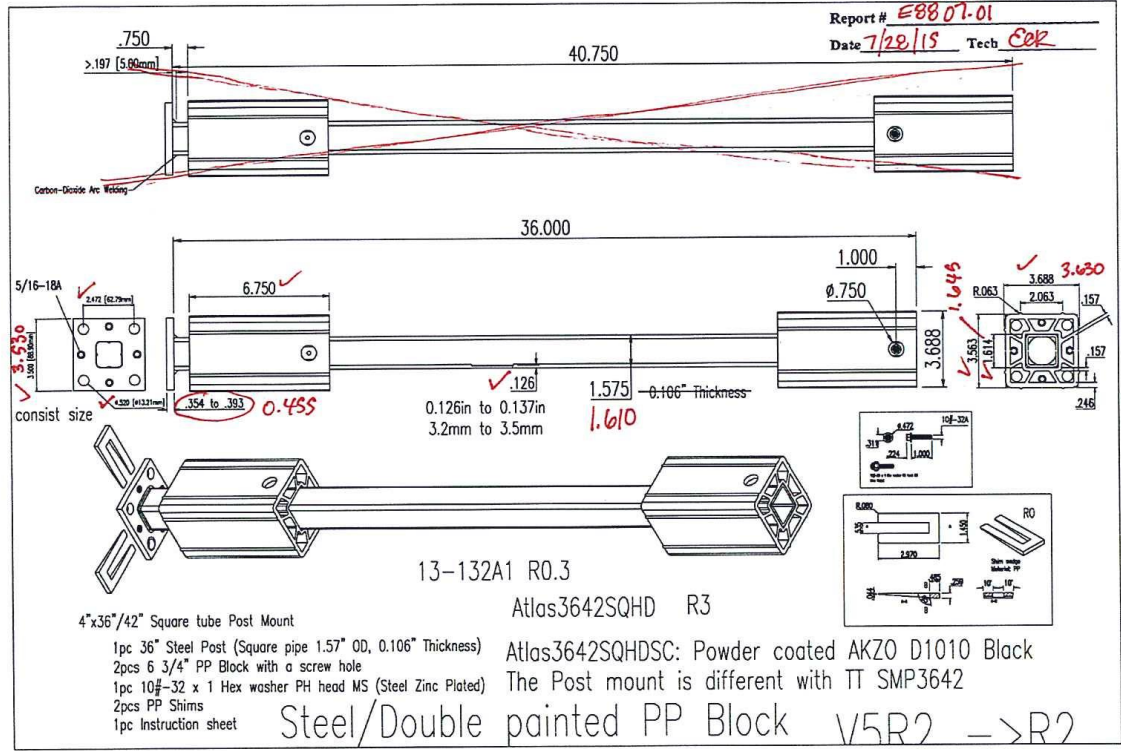


Test sample complies with these details.
Deviations are noted.

Report # **E88 07-01**
Date **7/28/15** Tech **Cor**



- 4"x36"/42" Square tube Post Mount
- 1pc 36" Steel Post (Square pipe 1.57" OD, 0.106" Thickness)
- 2pcs 6 3/4" PP Block with a screw hole
- 1pc 10#-32 x 1 Hex washer PH head MS (Steel Zinc Plated)
- 2pcs PP Shims
- 1pc Instruction sheet

Atlas3642SQHDSC: Powder coated AKZO D1010 Black
The Post mount is different with TT SMP3642
Steel/Double painted PP Block V5R2 -> R2