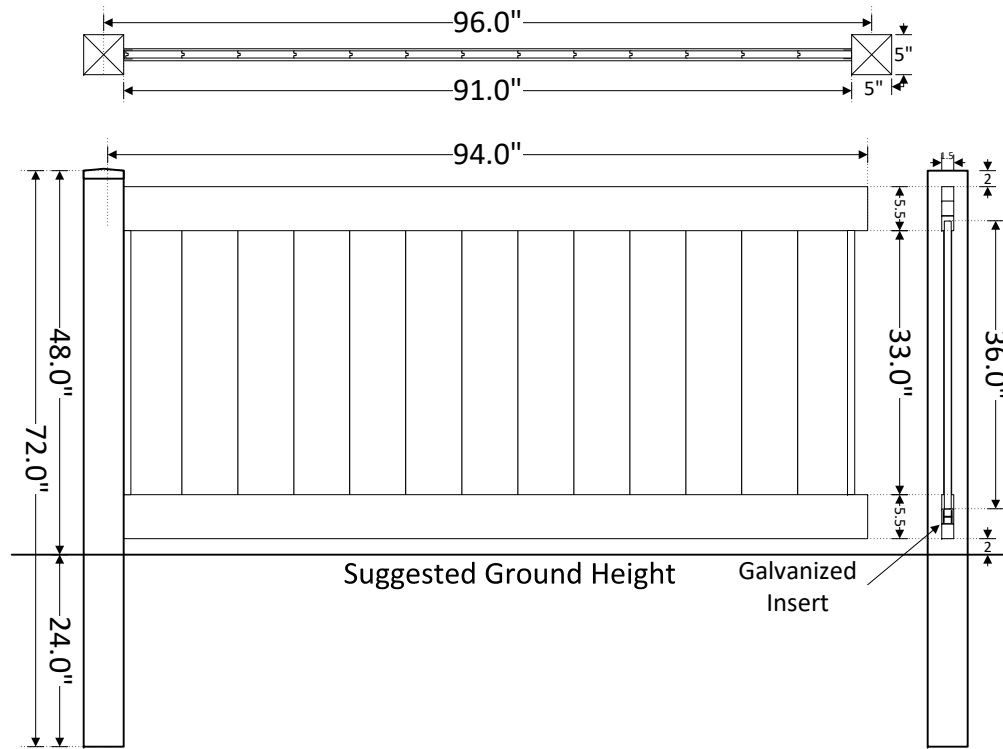




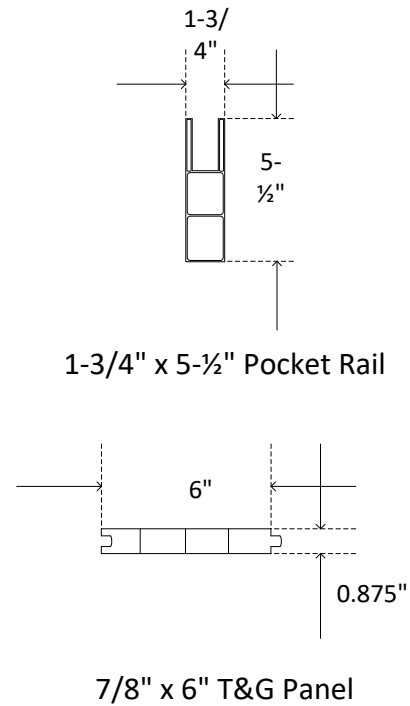
608 Queen Street
P.O. Box 1137
Grifton, NC 28530

Material list

- 2 - 1.75" X 5.5" X 94" Pocket Rails
- 15 - 7/8" X 6" X 36" Panels
- 2 - 7/8" X 33" Trim Channel
- 1 - 93" Galvanized Insert

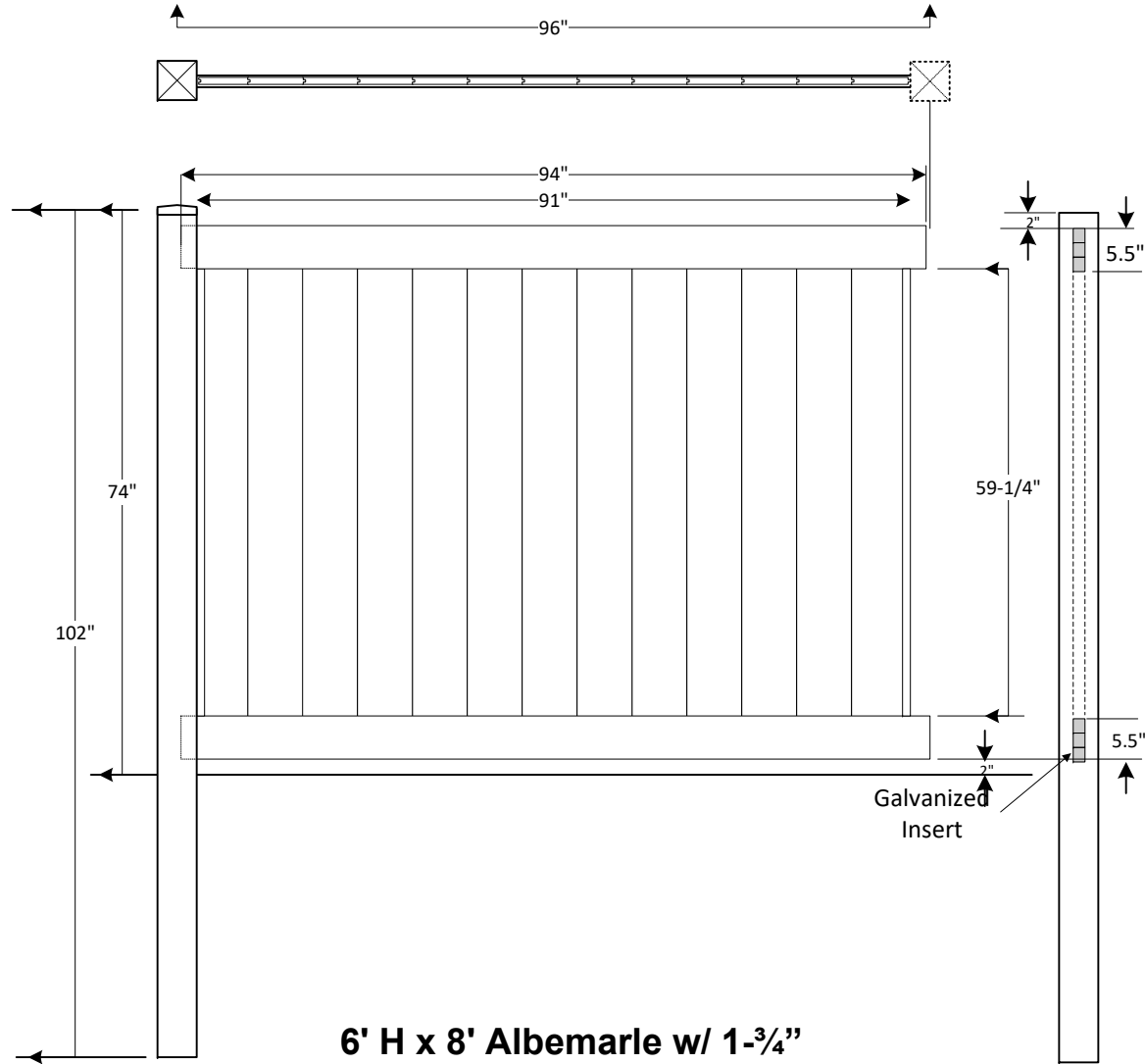


4' H x 8' Albemarle w/ 1-3/4" Pocket Rails; 6" T&G





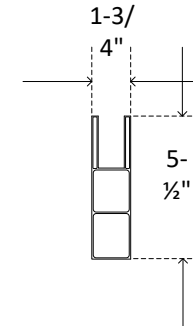
608 Queen Street
P.O. Box 1137
Grifton, NC 28530



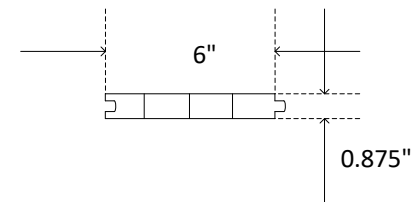
6' H x 8' Albemarle w/ 1-3/4" Pocket Rails; 6" T&G

Material list

- 2 - 1.75" X 5.5" X 94" Pocket Rails
- 15 - 7/8" X 6" X 62-1/4" Panels
- 2 - 7/8" X 59-1/4" Trim Channel
- 1 - 93" Galvanized Insert



1-3/4" x 5-1/2" Pocket Rail



7/8" x 6" T&G Panel